

Parkheath

Sold on Service

Belsize Road NW6

£2,500 PCM (£577 per week) - Camden Band E



Spacious 2 double bedroom apartment

Reception/dining room with wood flooring

Separate kitchen with dishwasher

Just a few minutes' walk to South Hampstead train station

EPC: Rating D

First floor (top floor) of a period conversion

Built in wardrobes in both bedrooms

Bathroom/WC

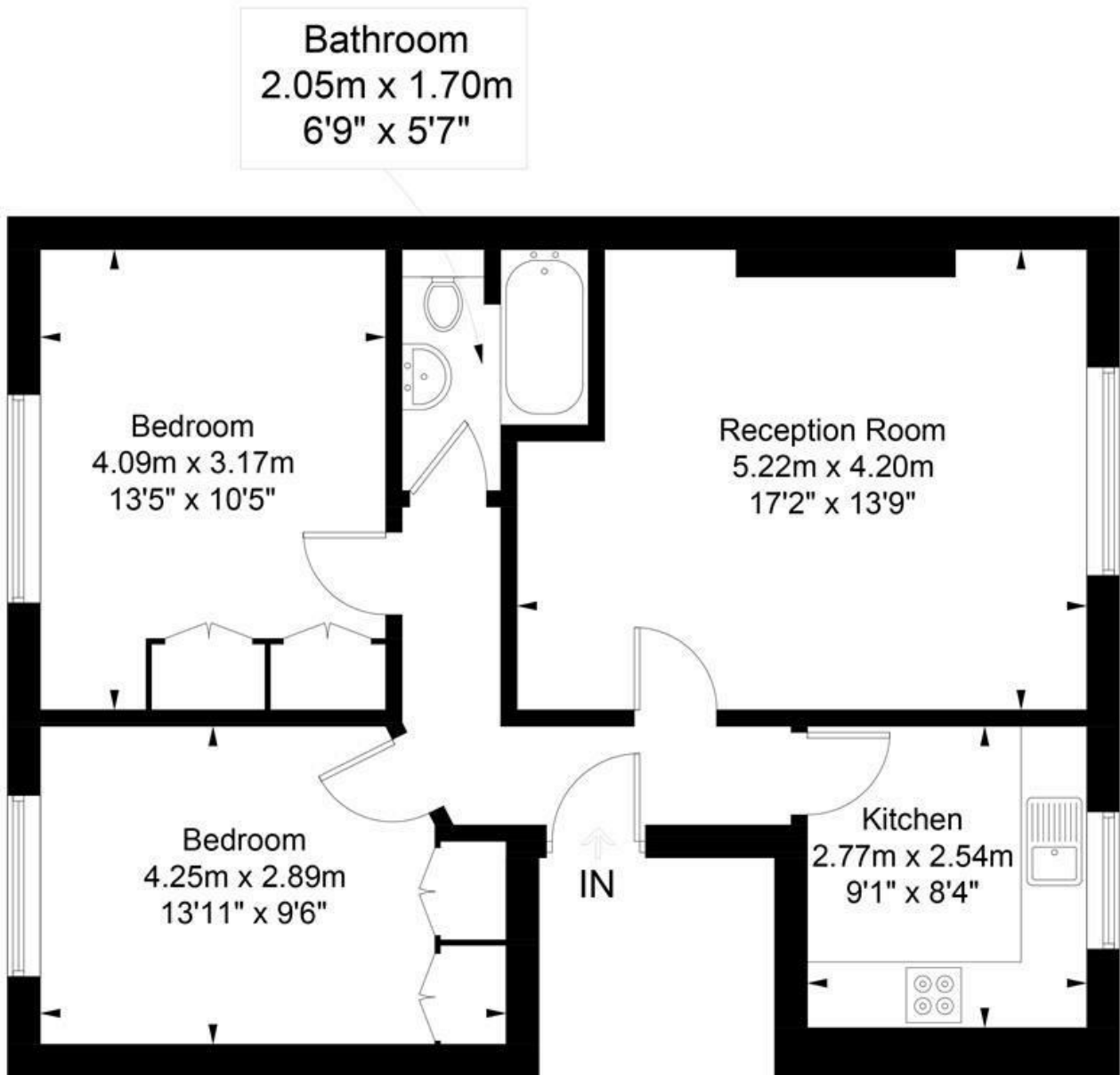
Conveniently located for Swiss Cottage, Finchley Road and West Hampstead amenities

Council Tax: Camden Band E

West Hampstead Office 020 7794 7111

Belsize Road

Approximate Gross Internal Area = 63.5 sq m / 683 sq ft



First Floor

Illustration for identification purposes only, measurements are approximate, not to scale. FloorplansUsketch.com © 2018 (ID406855)
ELLIE CLAIRE PHOTOGRAPHY LTD

The particulars do not constitute part of an offer or contract. The particulars, including text, photographs and plans, are for the guidance only of prospective purchasers/tenants and must not be relied upon as statements of fact. The descriptions provided therein represent the opinion of the author and whilst given in good faith should not be construed as statements of fact. Nothing in these particulars shall be deemed a statement that the property is in good condition or otherwise or that any services or facilities are in good working order. All measurements are approximate